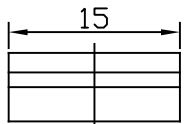
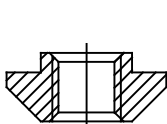
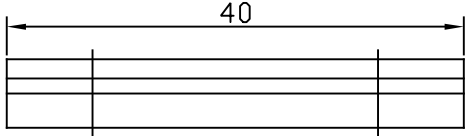
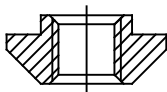


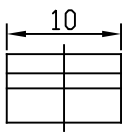
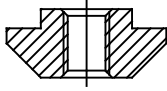
>2000	>1000 ...2000	>400 ...1000	>120 ...400	>30 ...120	>6 ...30	>0 ...6	Massbereich (ohne Bohrung)	Abmass	Masse ohne Toleranz- angabe	N12	N11	N10	N9	N8	N7	N6	Oberflächengüte N	Ra - Werte	Ra - Werte in Abhängigkeit von N...
± 2.0	± 1.2	± 0.8	± 0.5	± 0.3	± 0.2	± 0.1				bis 0.8									



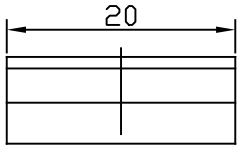
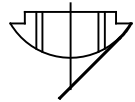
Nutenstein S15-M6



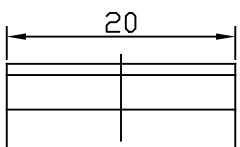
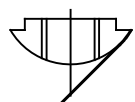
Nutenstein S40-2M6



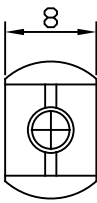
Nutenstein S10-M4



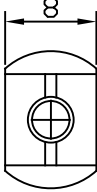
Nutenstein KE20-M6  
(Nachträglich einklinkbar)



Nutenstein KE20-M5  
(Nachträglich einklinkbar)



Nutenstein KE8-M5  
(Nachträglich einklinkbar)



Nutenstein KE8-M4  
(Nachträglich einklinkbar)

N6	Stückzahl	Dimension	Pos.	Material, VSM/DIN	Bemerkung
N6	bis 0.8				

**Nutensteine**  
 H:\Anwender\AR\MTS-Zeichnungen\AKKC63\_1\_Neu.dwg  
 Tuesday, October 07, 2014 10:52:17

Original Diese Zeichnung ist unser Eigentum. Wir behalten uns dafür alle Rechte vor.

	Gezeichnet	
	Geprüft	
	Alte Z.Nr:	

Massstab: 1:1

**A4 SCHMID** RUDOLF SCHMID AG  
 Freiburgstrasse 830  
 CH-3174 Thörishaus

Akkc63\_1/06

Index: 01